



# RT208



## HIGH LEVEL 2D OEM BARCODE SCANNER

### **Features:**

- ▶ **Outstanding for reading small Data matrix code from chips\ small labels, or the inverse code printed in machine surface.**

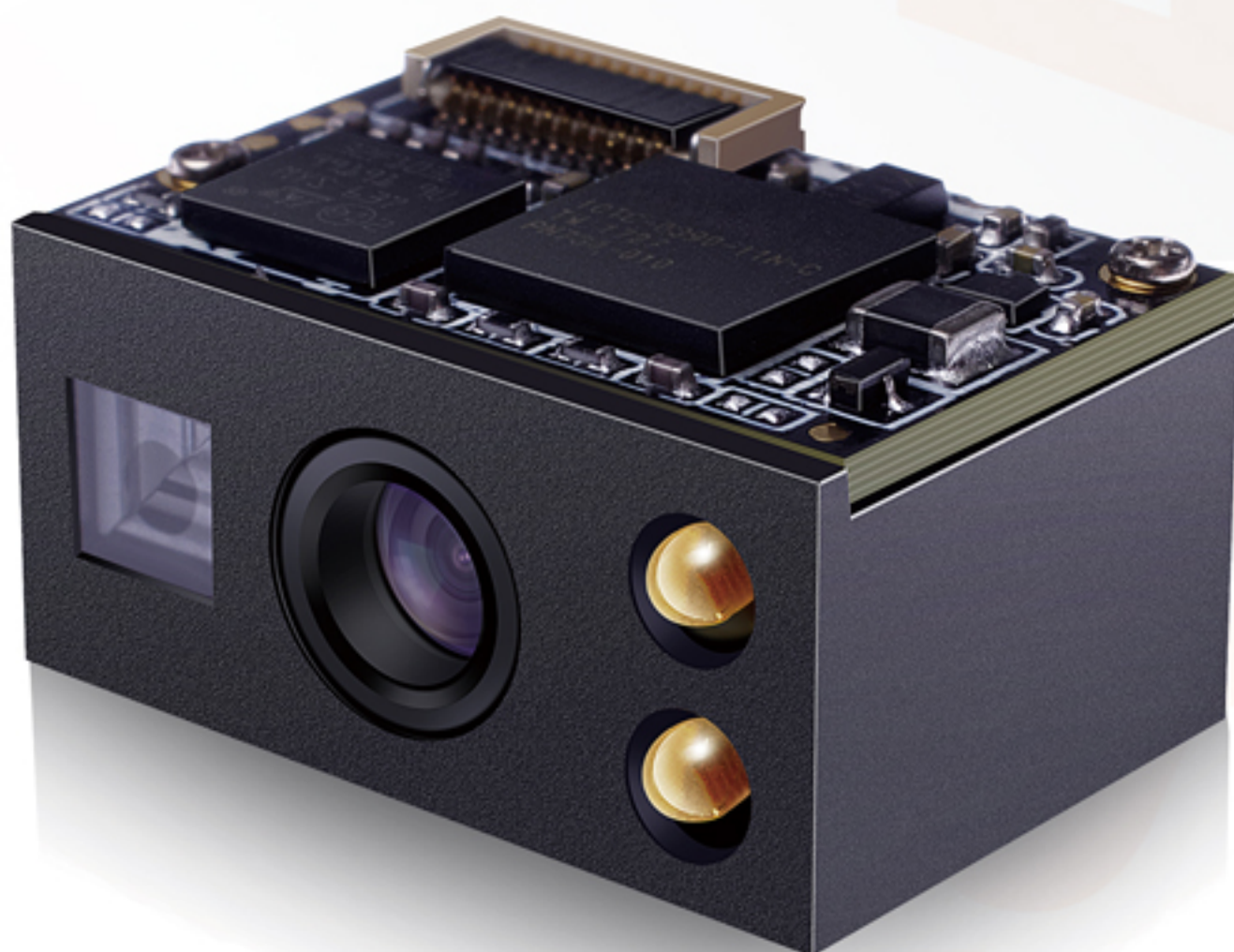
With 752\*480 imager sensor and special optimization, the RT208 with the capacity of reading those small and high-density bar code (especially Data matrix code). This feature makes the RT208 very outstanding.

- ▶ **Excellent performance for reading usual bar codes like QR code, most of 1D codes**

The RT208 is a high-level 2d OEM barcode scanner, its performance for reading usual bar code is excellent, either read from paper or from phone screen. So if you find a higher level performance 2d OEM barcode scanner, this RT208 is your good choice!

- ▶ **Ultra compact, very small, with decoder board and imager 2-in-1**

This compact, lightweight engine fits easily into even the most space-constrained equipment such as data collectors, meter readers, ticket validators, POS, vending machine and PDAs.



## Specification:

### Mechanical

Dimensions (LxWxH)	21.3(W)×15.5(D)×11.6(H)mm
Weight	6.5 g

### Electrical

Voltage	3.3 VDC±10%
Operating current	200 mA
Standby current	7 mA
Power Consumption	660mW (typical)
Host System Interfaces	TTL level serial, or if with emulation kit: USB HID-KBW, USB virtual COM, RS232
Light Source	Illumination: 625±10nm red LED; Aiming: 650nm laser diode
Electromagnetic compatibility	EN55022, EN55024, EN60950-1

### Environmental

Operating Temperature	-20°C to 50°C
Storage Temperature	-40°C to 70°C
Humidity	5% to 95% relative humidity, non-condensing
Drop	withstand 1.0 m drops to concrete on each of the faces
Illumination Level	0 to 100,000 lux

### Scan Performance

Scan Pattern	Area Image, Omnidirectional
Optical Resolution	CMOS 752*480 pixels
Resolution	≥5mil (It differ from different type of bar code)
Symbol Contrast	25% minimum reflectance difference
Scan Angle	Roll: 360°, Pitch: ±55°, Skew: ±55°
Field of View	Horizontal 36°, Vertical 23°
Decode Capability	2D: PDF417, Data Matrix (ECC200, ECC000, 050, 080, 100, 140), QR code 1D: Code 128, EAN-13, EAN-8, Code 39, UPC-A, UPC-E, Codabar, Interleaved 2 of 5, ITF-6, ITF-14, ISBN, Code 93, UCC/EAN-128, GS1 Databar, Matrix 2 of 5, Code 11, Industrial 2 of 5, Standard 2 of 5, Plessey, MSI-Plessey, etc.

### Typical Depth of Field

EAN-13	60mm-290mm (13mil)
PDF417	55mm-135mm (6.67mil)
Code39	55mm-165mm (5mil)
Data Matrix	55mm-130mm (10mil)
QR Code	45mm-175mm (15mil)

