

# RT203 Quick User Guide

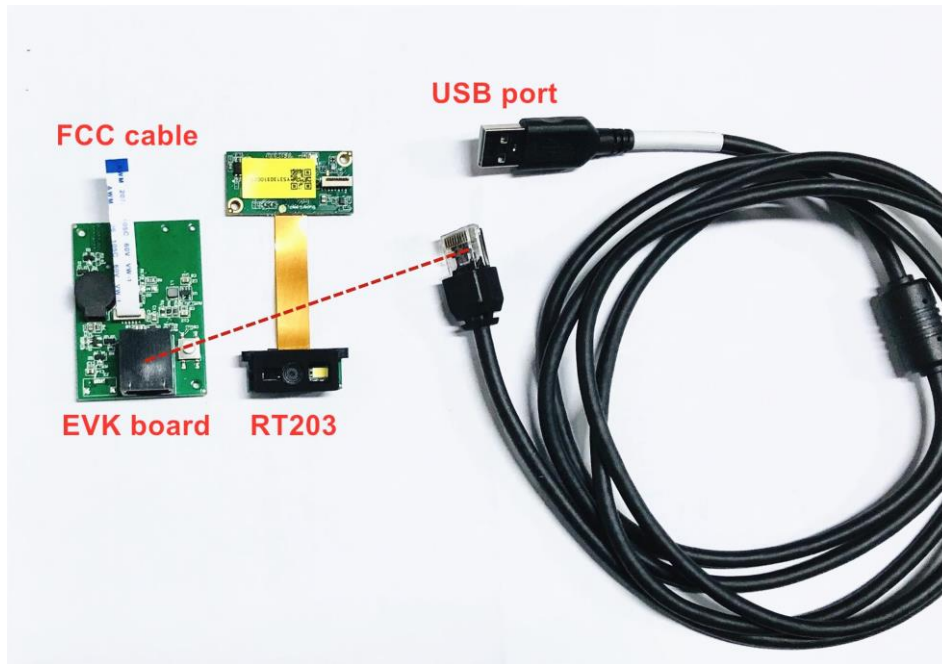
**Thank you for choosing RTscan, this guide will help you to use RT203 easily.**

## Index

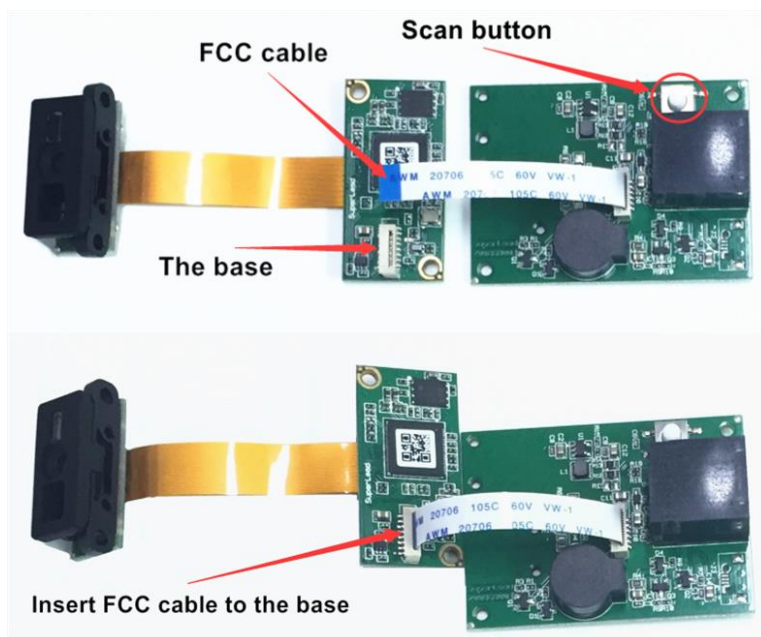
1. USB-HID KBW .....	2
2. USB-COM (USB COM Port Emulation).....	4
3. RS232 Serial Port.....	7
4. TTL Interface.....	10
5. Instruction Documents Download.....	11
6. Programming Video Guide.....	11

## 1. USB-HID KBW

If your RT203 come with USB interface, the default setting is USB-HID KBW, it's plug and play, connect the scanner with your computer and run Notepad / MS Word, after reading the barcode, the decoded data will be shown there.



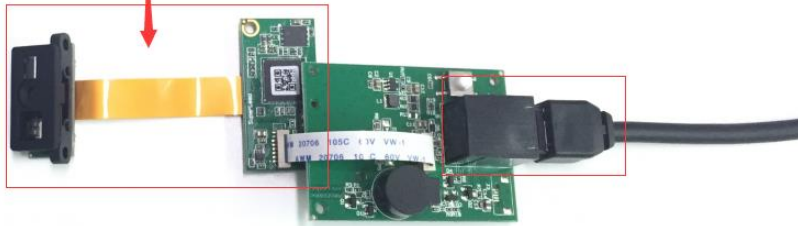
For the connection of the connector, please refer to the picture below.



USB interface connect to your PC

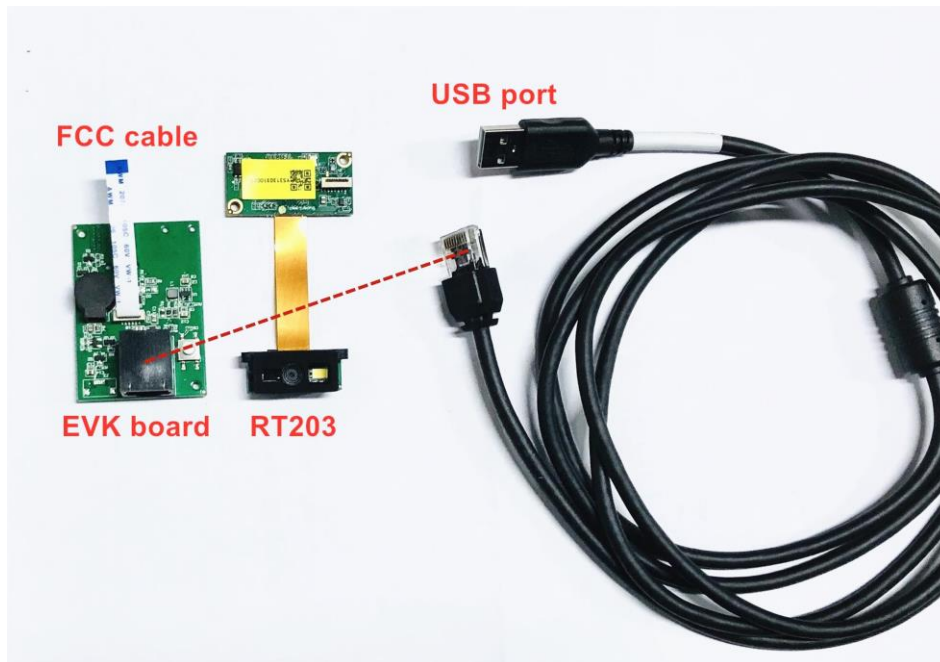


RT203



## 2. USB-COM (USB COM Port Emulation).

If your RT203 come with USB-COM (USB COM Port Emulation), you will need to have a software that can work with a virtual serial port to test the scanner.

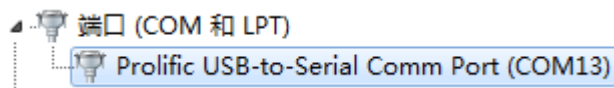


You can use your own Virtual Serial Tool, or download the Virtual Serial Tool at the following link :

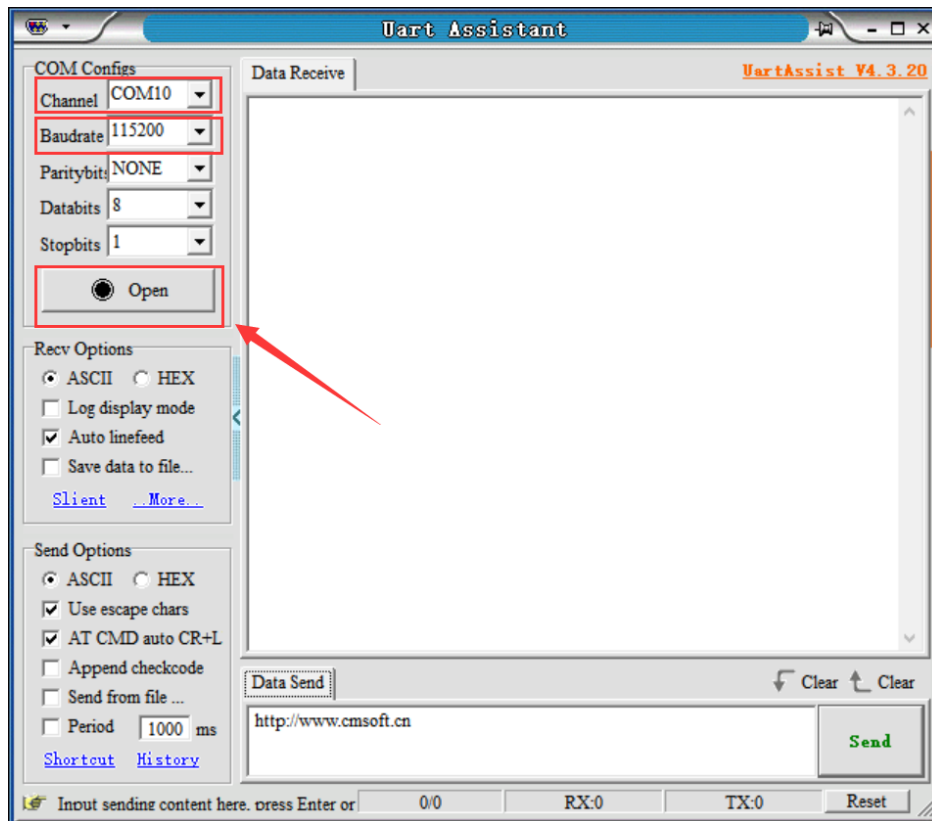
[https://drive.google.com/open?id=1djokTmXZJAIDSehI\\_7EMugiCazIkP5N](https://drive.google.com/open?id=1djokTmXZJAIDSehI_7EMugiCazIkP5N)

Please do the following steps to use the reader with USB Virtual COM.

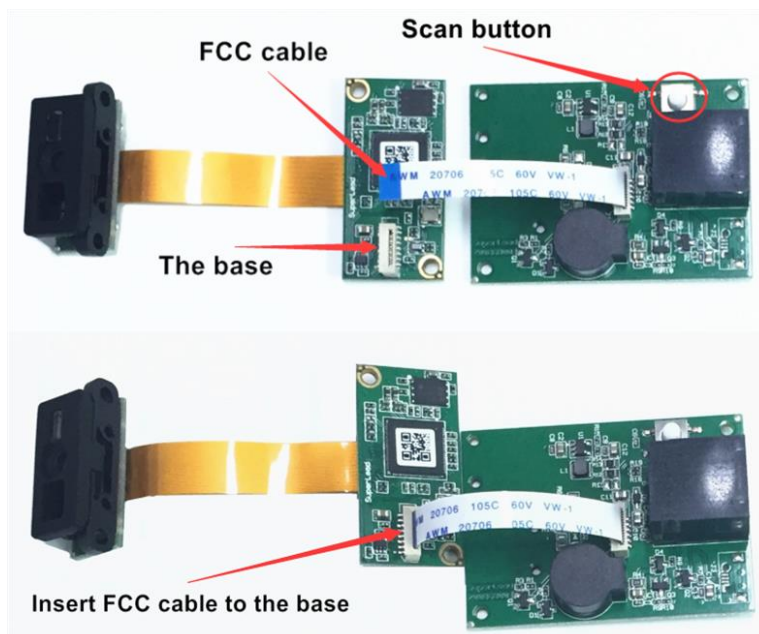
- ① Connect the reader with your PC or terminal.
- ② In most cases, the computer will install the driver automatically, if not, please contact our sales to get the driver.
- ③ Confirm the COM port number at Device Manager as below picture, below is the COM13.



- ④ Run a virtual serial port tool, then pick the exact COM port number (like the below is COM10) and also the correct baud rate 115200 (default baud rate is 115200).



For the connection of the connector, please refer to the picture below.



USB interface connect to your PC

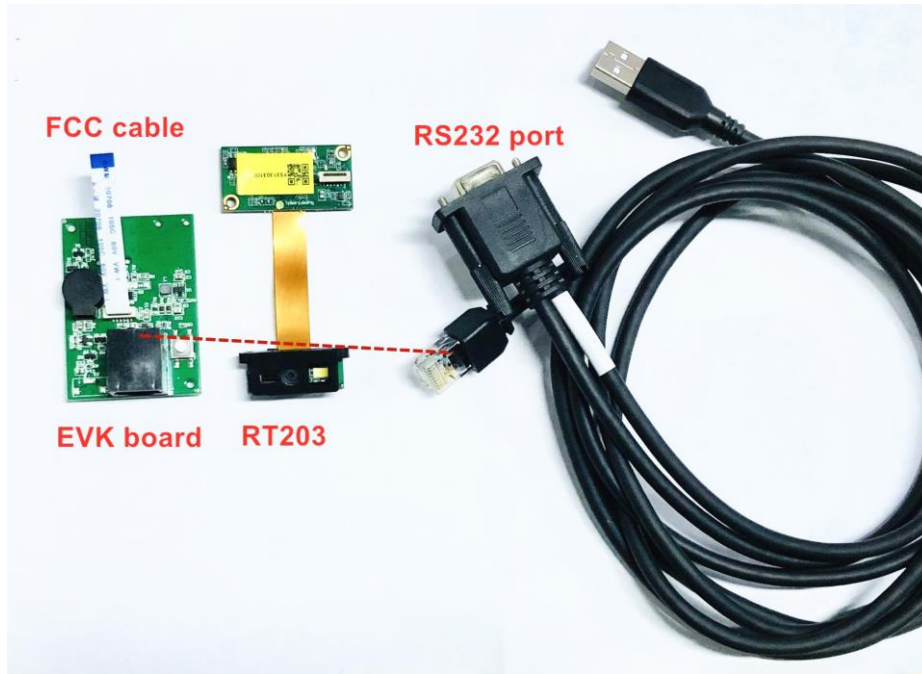


RT203



### 3. RS232 Serial Port

If your RT203 come with RS232 interface, you will need to have a software that can work with a serial port to test the scanner.

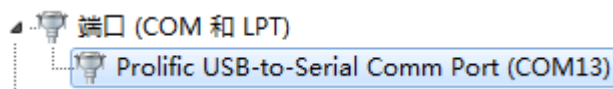


You can use your own Virtual Serial Tool, or download the Virtual Serial Tool at the following link :

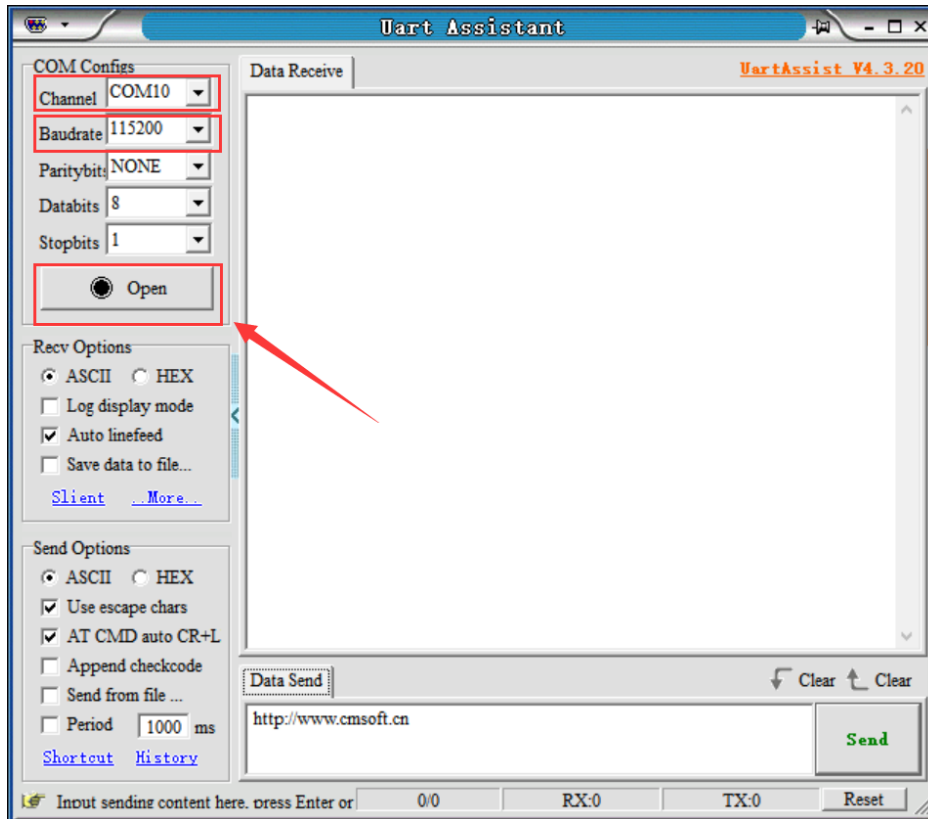
[https://drive.google.com/open?id=1djokTmXZJAIDSehhI\\_7EMugiCazIkP5N](https://drive.google.com/open?id=1djokTmXZJAIDSehhI_7EMugiCazIkP5N)

Please do the following steps to use the reader with RS232 serial port.

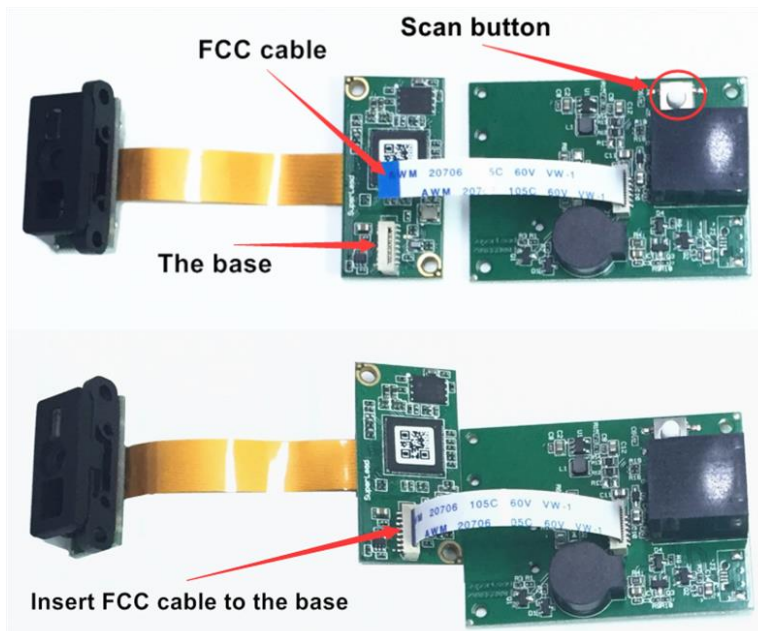
- ① Connect the reader with your PC or terminal.
- ② Confirm the COM port number at Device Manager as below picture, below is the COM13.



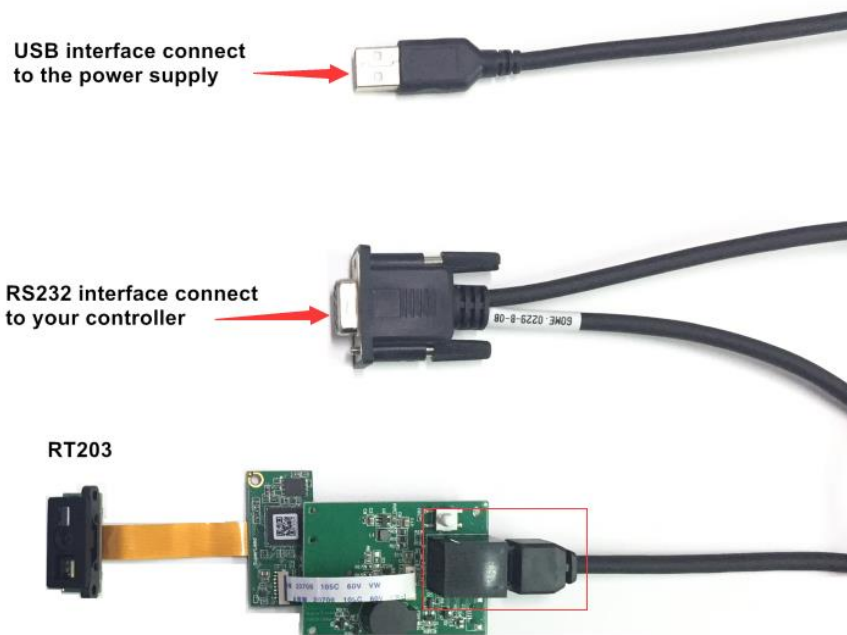
- ③ Run a virtual serial port tool, then pick the exact COM port number (like the below is COM13) and also the correct baud rate 115200 (default baud rate is 115200).



For the connection of the connector, please refer to the picture below.







PS: If you use the scanner with USB cable (USB-HID KBW) firstly, and want to change it with RS232 cable, please scan below setting code on USB-HID KBW mode before connect the RS232 cable.



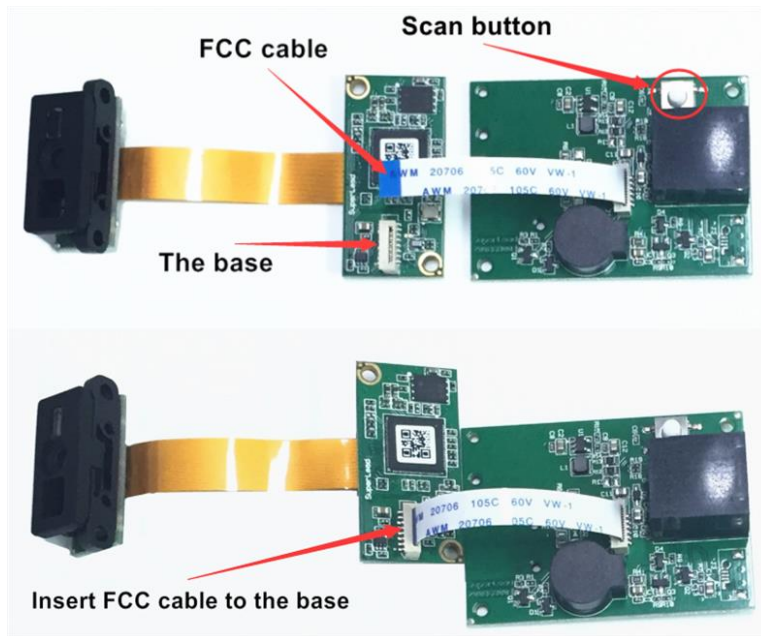
0606000.

**RS232 interface**

For all of Default serial communication parameters and baud rate setting, same with above for “USB COM Port Emulation”

## 4. TTL Interface

If your RT203 come with TTL interface, for the connection of the connector, please refer to the picture below.



## 5. Instruction Documents Download

You can kindly download the instruction documents of reader at the following link :

<https://drive.google.com/open?id=1QoUK7G5l1H0HdunJ66zkjszgD1jaLkRQ>

**Included:**

- Integration Guide
- User Manual
- Programming Command Guide
- Drawing

## 6. Programming Video Guide

You can program the barcode reader by commands, kindly refer to our video guide as below.

<https://youtu.be/LsX7aeaME00> -----Command programming guide

You can also program the barcode reader by setting codes , kindly refer to the RT203 User Guide.

If you need any other technical support from RTscan, please feel free to contact us:

[justin@rtscan.net](mailto:justin@rtscan.net), thank you!