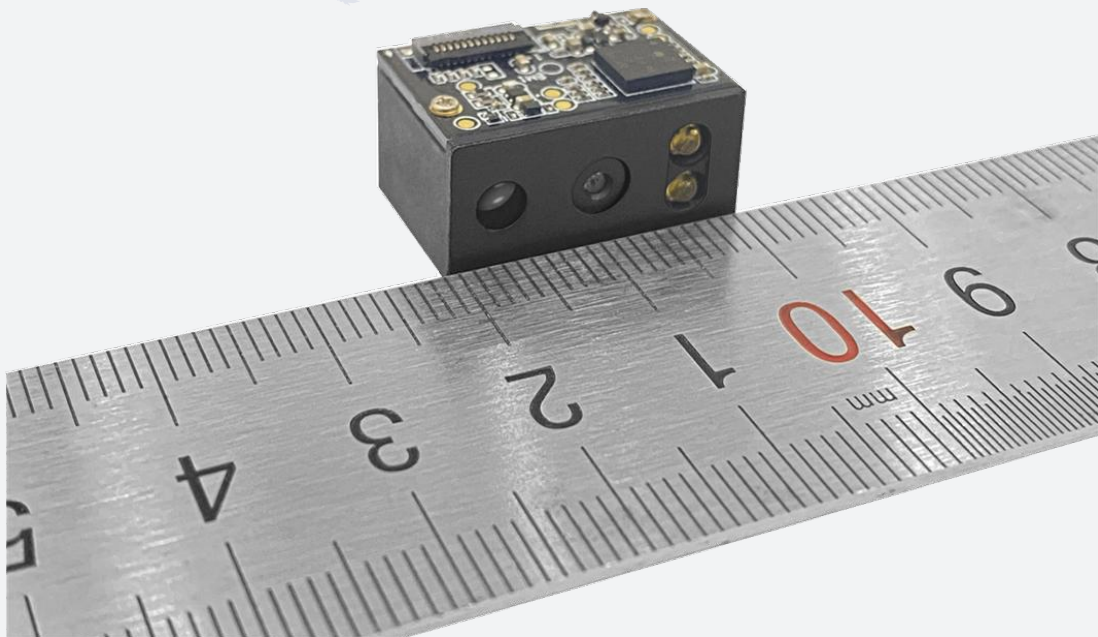




# RT206

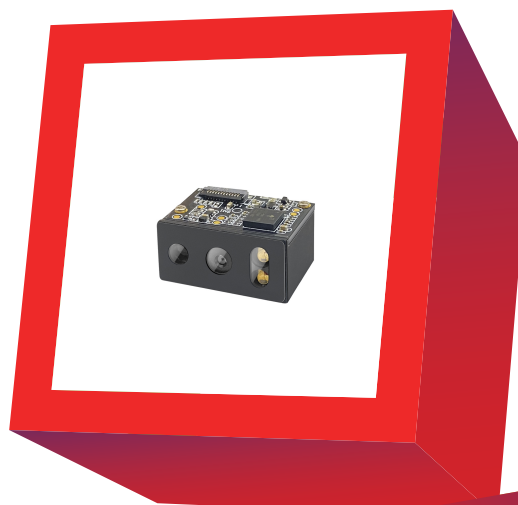
Barcode Scanner – OEM 2d Barcode Engine



## Features:

- ▶ **Ultra compact, very small, with decoder board and imager 2-in-1**

This compact, lightweight engine fits easily into even the most space-constrained equipment such as data collectors, meter readers, ticket validators, POS, vending machine and PDAs.



- ▶ **It has excellent performance to read those usual bar codes.**

This OEM 2D Barcode Engine would be your excellent choice for general use for scanning usual bar code.



- ▶ **It supports all mainstream 1D and standard 2D barcode symbologies**

(e.g.: PDF417, QR Code M1/M2/Micro, Data Matrix ) as well as

GS1-DataBarTM(RSS)

(Limited/Stacked/Expanded versions).

It can read bar codes on virtually any medium- paper, plastic card, mobile phones and other LCD display devices.



## Specification:

### Mechanical

Dimensions (LxWxH)	21.2(W)×14(D)×11.1(H)mm
Weight	4 g

### Electrical

Voltage	3.3 VDC±10%
Operating current	100mA (typical), 168mA (max.)
Standby current	8.1mA ( Sleep <100uA)
Power Consumption	437mW (typical)
Host System Interfaces	TTL level serial, or if with emulation kit: USB HID-KBW, USB virtual COM, RS232
LED class	EN62471:2008
Electromagnetic compatibility	EN55022, EN55024, EN60950-1

### Environmental

Operating Temperature	-20°C to 50°C
Storage Temperature	-40°C to 70°C
Humidity	5% to 95% relative humidity, non-condensing
Drop	withstand 1.0 m drops to concrete on each of the faces
Illumination Level	0 to 100,000 lux

### Scan Performance

Scan Pattern	Area Image
Optical Resolution	CMOS 640*480 pixels
Scan Angle	Omnidirectional
Symbol Contrast	25% minimum reflectance difference
Scan Angle	Roll: 360°, Pitch: ±50°, Skew: ±50°
Field of View	Horizontal 44°, Vertical 33.2°
Decode Capability	2D: PDF417, Data Matrix, QR code 1D: Code 128, UCC/EAN-128, AIM128, EAN-8, EAN-13, ISBN/ISSN, UPC-E, UPC-A, Interleaved 2 of 5, ITF-6, ITF-4, Matrix 2 of 5, Industrial 25, Standard 25, Code 39, Codabar, Code 93, Code 11, Plessey, MSI-Plessey, GS1-DataBarTM(RSS), (RSS-14, RSS-Limited, RSS-Expand)

Typical Depth of Field	EAN-13	50mm-365mm (13mil)
	Code 39	40mm-165mm (5mil)
	Data Matrix	35mm-115mm (10mil)
	QR Code	35mm-145mm (15mil)
	PDF 417	45mm-115mm (6.67mil)