

RT211 Quick User Guide

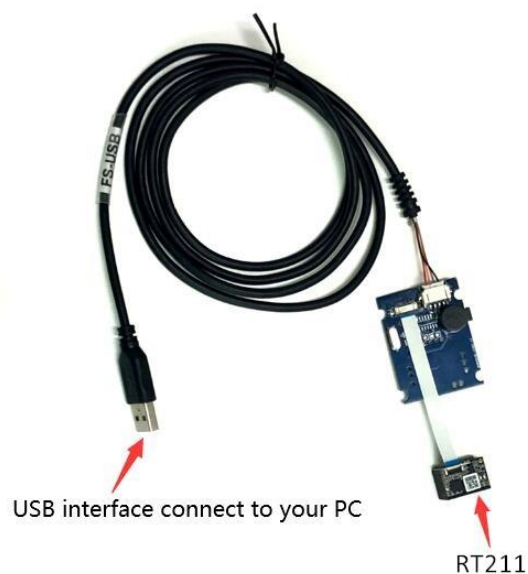
Thank you for choosing RTscan, this guide will help you to use RT211 easily.

Index

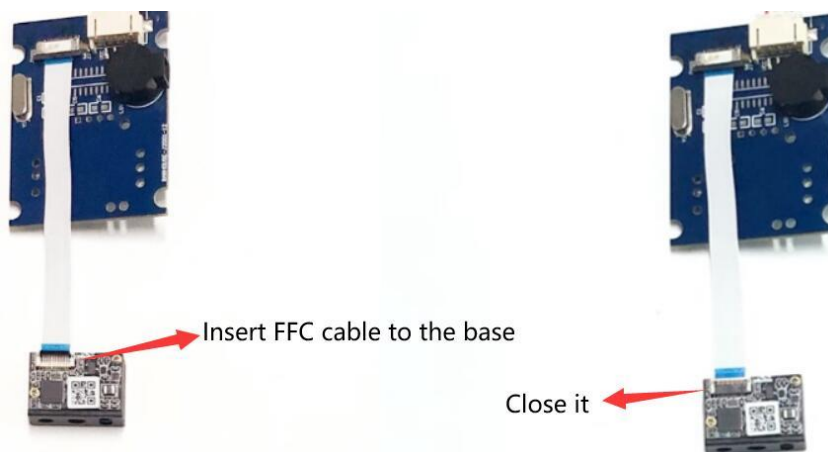
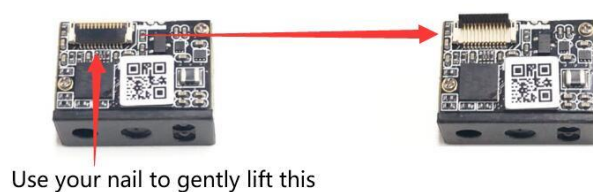
1. USB-HID KBW	2
2. USB-COM (USB COM Port Emulation).....	3
3. RS232 Serial Port.....	5
4. TTL Interface.....	7
5. Instruction Documents Download.....	8
6. Programming Guide	8

1. USB-HID KBW

If your RT211 come with USB interface, the default setting is USB-HID KBW, it's plug and play, connect the scanner with your computer and run Notepad / MS Word, after reading the barcode, the decoded data will be shown there.

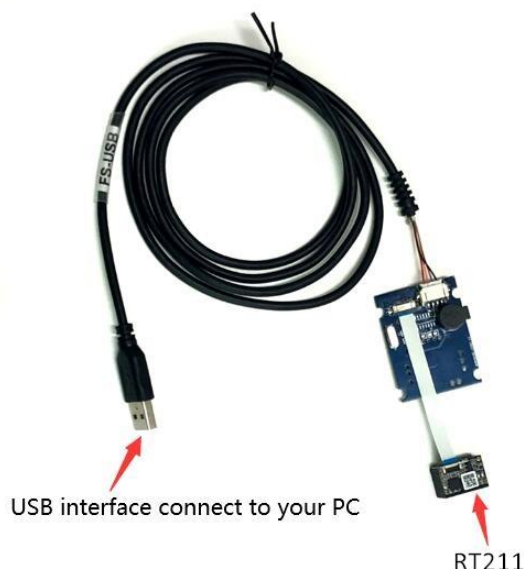


For the connection of the connector, please refer to the picture below.



2. USB-COM (USB COM Port Emulation).

If your RT211 come with USB-COM (USB COM Port Emulation), you will need to have a software that can work with a virtual serial port to test the scanner.

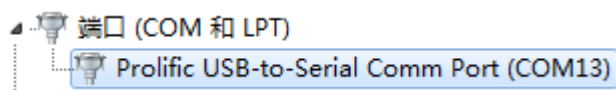


You can use your own Virtual Serial Tool, or download the Virtual Serial Tool at the following link :

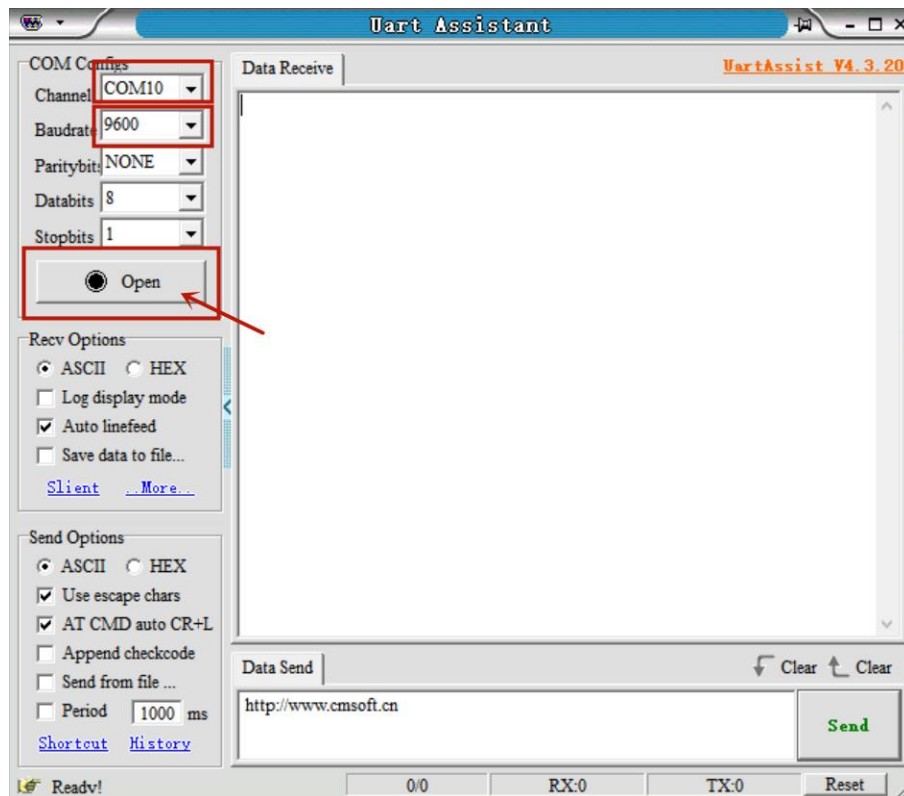
https://drive.google.com/open?id=1djokTmXZJAIDSehhl_7EMugiCazlkP5N

Please do the following steps to use the reader with USB Virtual COM.

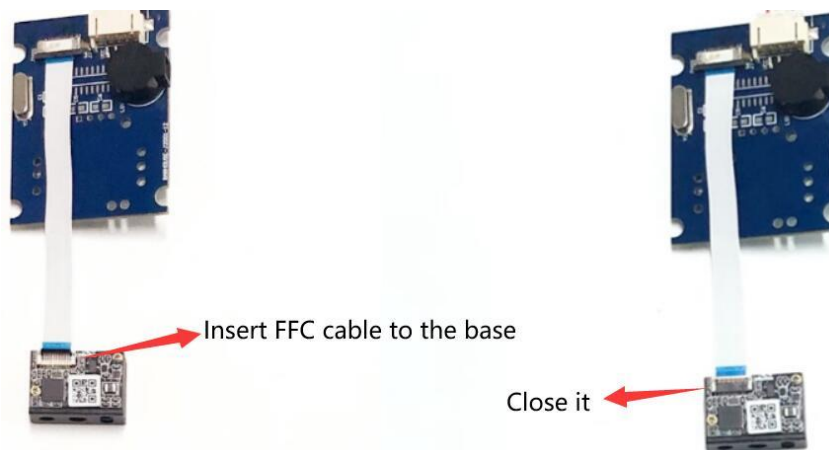
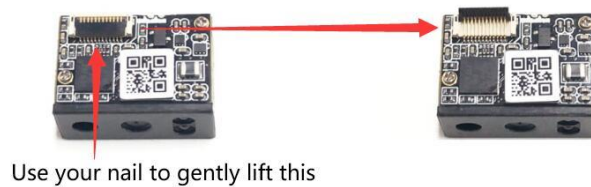
- ① Connect the reader with your PC or terminal.
- ② In most cases, the computer will install the driver automatically, if not, please contact our sales to get the driver.
- ③ Confirm the COM port number at Device Manager as below picture, below is the COM13.



- ④ Run a virtual serial port tool, then pick the exact COM port number (like the above is COM13) and also the correct baud rate 9600 (default baud rate is 9600).



For the connection of the connector, please refer to the picture below.



3. RS232 Serial Port

If your RT211 come with RS232 interface, you will need to have a software that can work with a serial port to test the scanner.

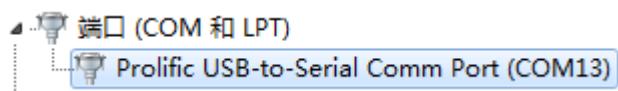


You can use your own Virtual Serial Tool, or download the Virtual Serial Tool at the following link :

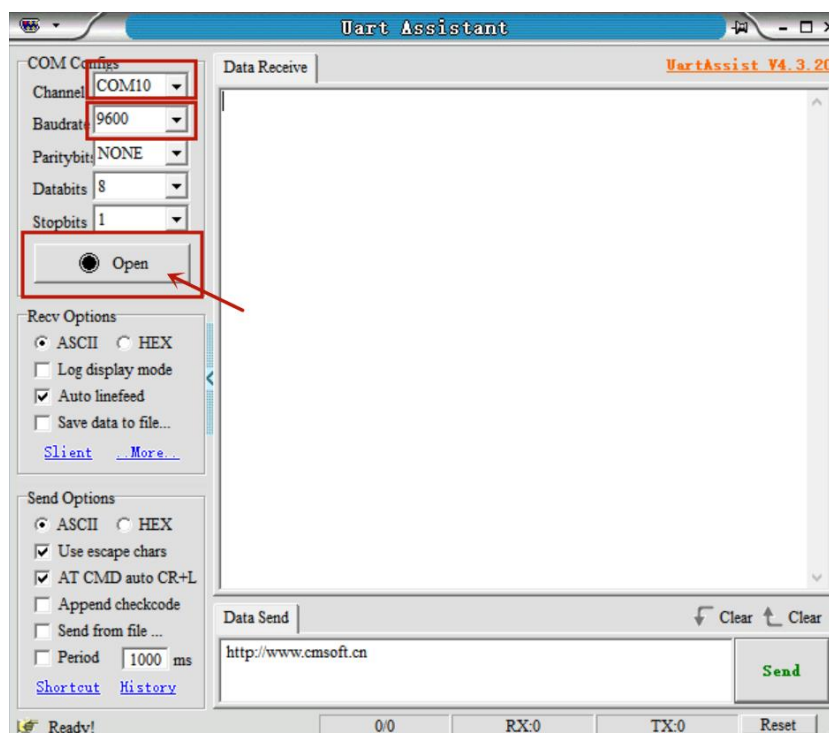
https://drive.google.com/open?id=1djokTmXZJAIDSehhl_7EMugiCazIkP5N

Please do the following steps to use the reader with RS232 serial port.

- ① Connect the reader with your PC or terminal.
- ② Confirm the COM port number at Device Manager as below picture, below is the COM13.



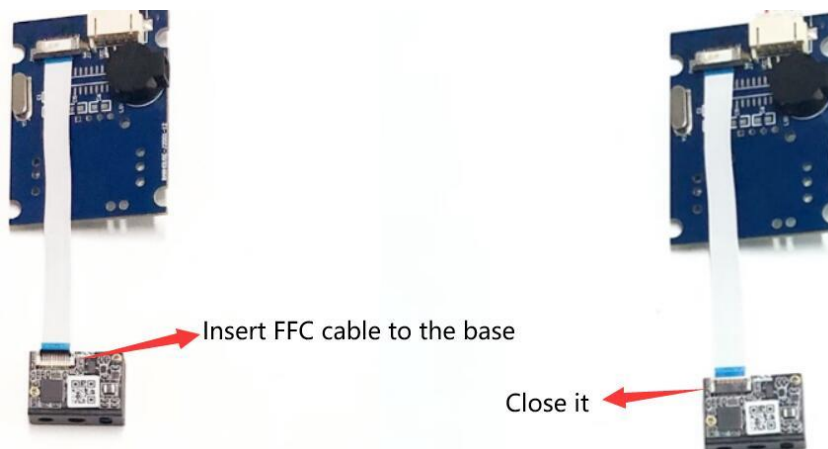
- ③ Run a virtual serial port tool, then pick the exact COM port number (like the above is COM13) and also the correct baud rate 9600 (default baud rate is 9600).



For the connection of the connector, please refer to the picture below.

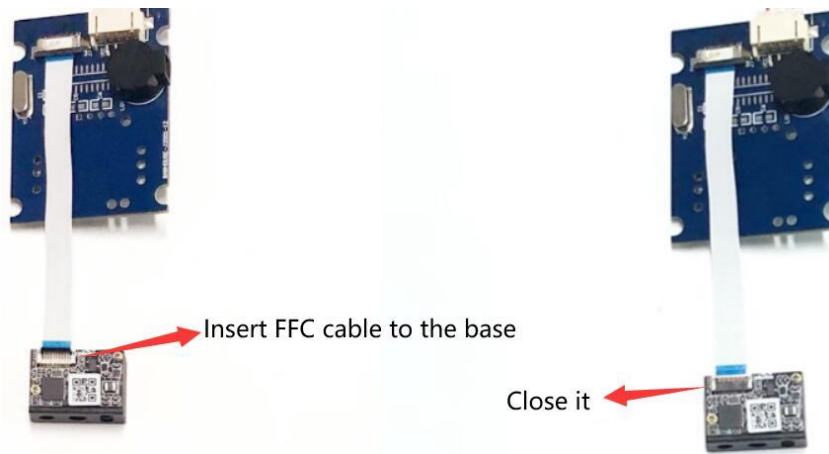
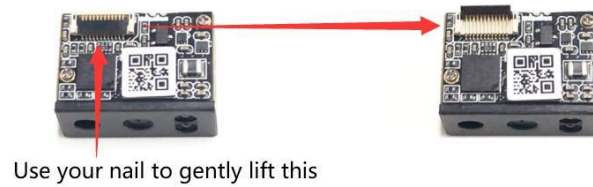


Use your nail to gently lift this



4. TTL Interface

If your samples come with TTL interface, for the connection of the connector, please refer to the picture below.



5. Instruction Documents Download

You can kindly download the instruction documents of reader at the following link :

<https://drive.google.com/open?id=1C8ve73so-xaOSqszvCW9JI9T6kPKABF->

Included:

- Integration Guide
- User Guide
- Datasheet

6. Programming Guide

You can program the barcode reader by commands, kindly refer to the RT211 User Guide Page 3 - Page15.

If you need any other technical support from Rtscan, please feel free to contact us: justin@rtscan.net, thank you!