



RT220

OEM Scan Engine – 2D Barcode Imager

OEM 2D Barcode Reader>>RT220

Do you want to get a OEM barcode scan engine but worry about the complicated integration program which necessary if work with the TTL UART interface of a common barcode scan engine? Then here its a good news for you: we developed this new OEM 2d barcode scan engine RT220 which output via USB or RS232 interface directly, connect it with your system via USB/RT232 and just simply setting via setting codes, then its there ready to work!



2D Barcode Imager

For some of our customers, their device's space is not so limited, and they do not want to pay much time to do the program of the integration of their system with our barcode scan engine RT200 by its UART TTL signals. So here we developed this new module RT220! The RT220 with RT200 barcode scan engine inside, but with USB or RT232 interface output directly (and not via the evaluation kit board) and just with a small housing added, and only a little bigger than RT200. This greatly facilitate the integration work and can make your integration so easy than never before.

- ▶ Based on state-of-the-art CMOS technology & advanced image processing and decoding technology , RT220 is a high performance OEM 2D barcode scan engine, it can read poorly printed 1D/2D bar code , and outstanding especially for reading 1D/2D bar codes from mobile phone screen, laptop screen, tablet computer screen like Ipad screen.
- ▶ As an embedded module, it's compact designed and can be widely used for data collection terminals, kiosks, robotic automation, medical instruments and countless other applications, this is your ideal choice for simple embedded, high-performance data collection application.
- ▶ Outstanding in user friendly, with USB or RS232 interface directly, simple integration.



- Compact, easy to be embedded
- USB or RT232 interface directly, no need to pay much time on system integration program
- Support most of 1D/2D code decoding
- With high performance processing chip inside, it is outstanding in high speed decode excellent performance in code reading from phone screen
- Easy to be programmed, support firmware upgrade

Specification:

Mechanical

Dimensions (LxWxH)	55mm×45mm×24mm..
Weight	75 g

Electrical

Input Voltage	3.3V±5% VDC
Operating Power	0.99 W (300mA @ 3.3 VDC)
Standby Power	0.212W (70mA @ 3.3VDC)
Host System Interfaces	USB virtual COM, USB-HID, RS232
LED class	EN62471:2008
Electromagnetic compatibility	EN55022, EN55024, EN60950-1

Environmental

Operating Temperature	-20°C to 60°C
Storage Temperature	-40°C to 60°C
Humidity	5% to 95% relative humidity, non-condensing
Drop	withstand 1.0 m drops to concrete on each of the faces
Ambient light	Immune to normal artificial indoor and natural outdoor (direct sunlight) lighting.

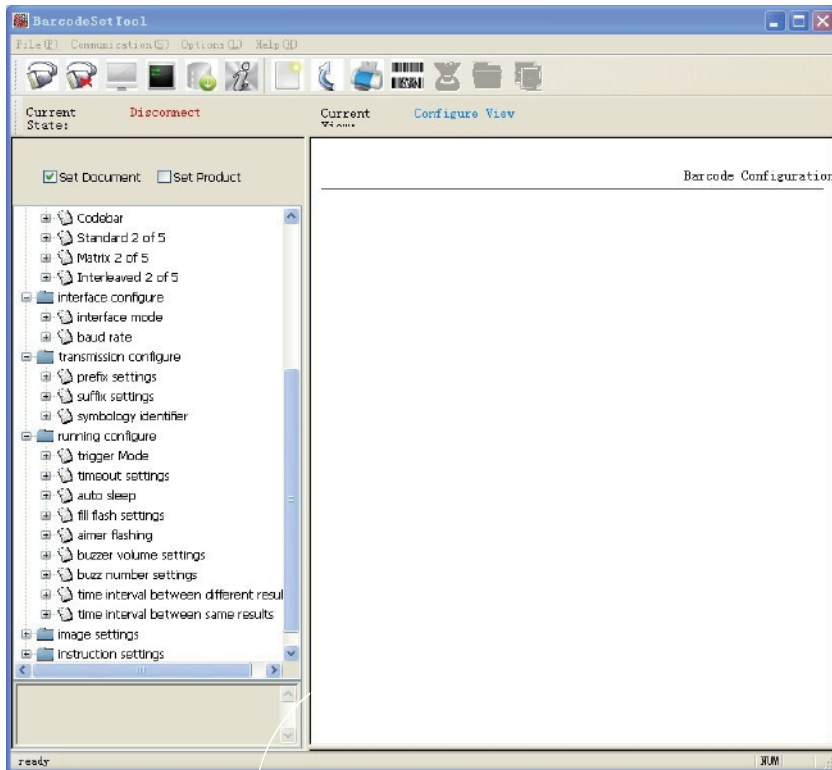
Scan Performance

Scan Pattern	Area Image
Optical Resolution	752*480 pixels
Scan Angle	Omnidirectional, 45°(Horizontal), 30°(Vertical)
Symbol Contrast	25% minimum reflectance difference
Motion tolerance	Up to 10 in./25cm per second
Decode Capability	1D: Code 128,EAN-13,EAN-8,Code39,,etc. 2D: PPDF417,QR Code,Data Matrix,etc.

Warranty

1 year factory warranty

Configuration Tool :



Field of View

