

RT830B Quick User Guide

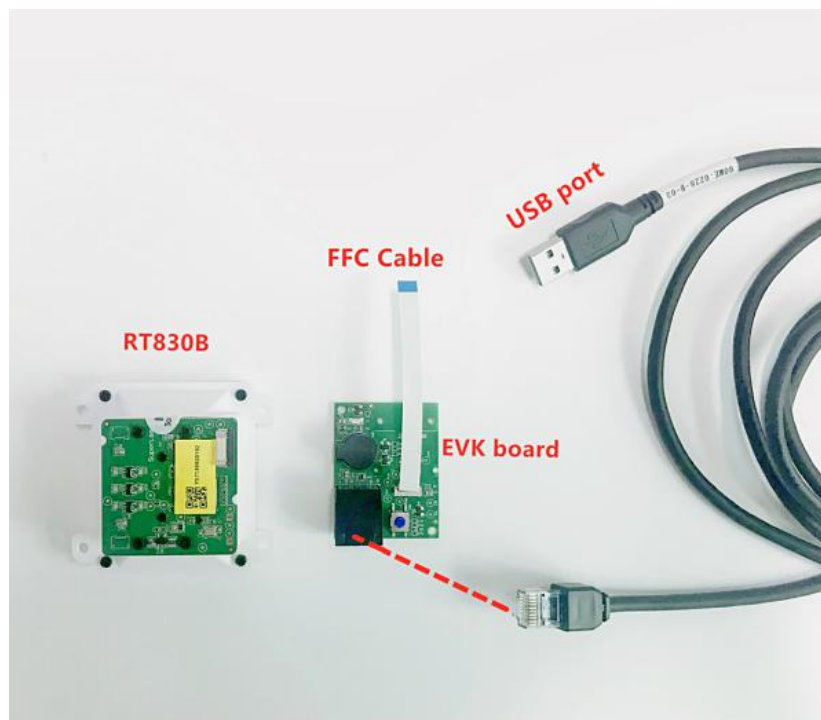
Thank you for choosing RTscan, this guide will help you to use RT830B easily.

Index

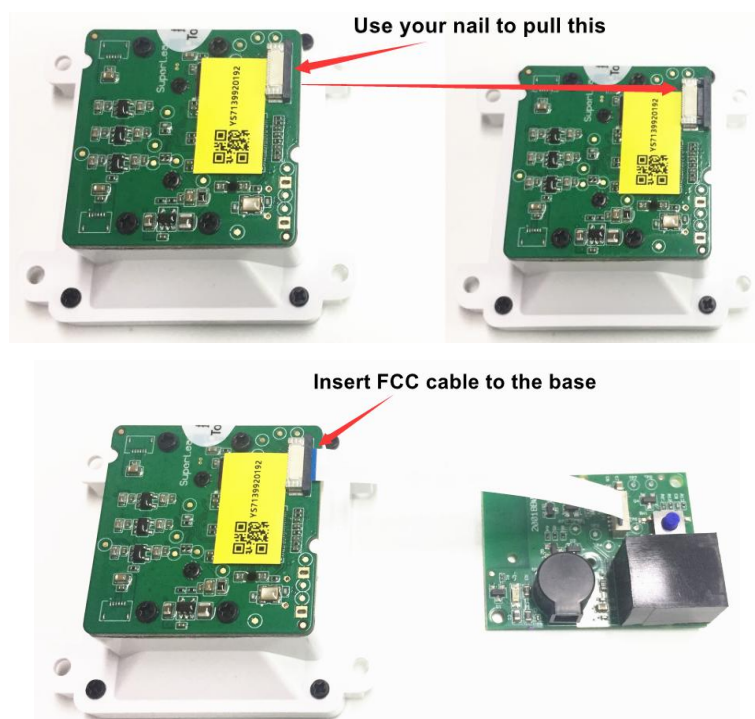
1. USB-HID KBW.....	2
2. USB-COM (USB COM Port Emulation).....	4
3. RS232 Serial Port.....	7
4. TTL Interface.....	10
5. Instruction Documents Download.....	11
6. Programming Video Guide.....	11

1. USB-HID KBW

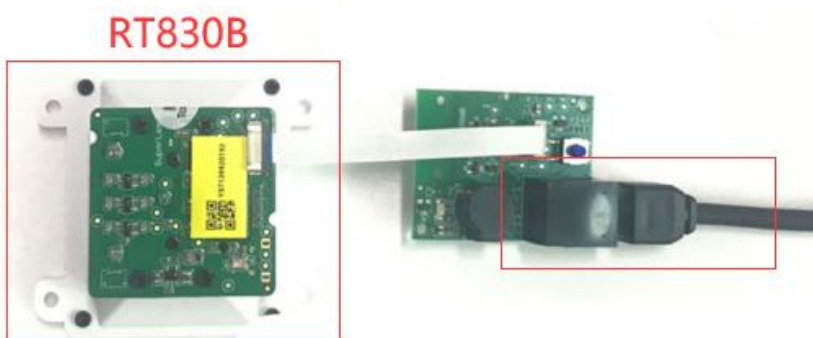
If your RT830B come with USB interface, the default setting is USB-HID KBW, it's plug and play, connect the scanner with your computer and run Notepad / MS Word, after reading the barcode, the decoded data will be shown there.



For the connection of the connector, please refer to the picture below.

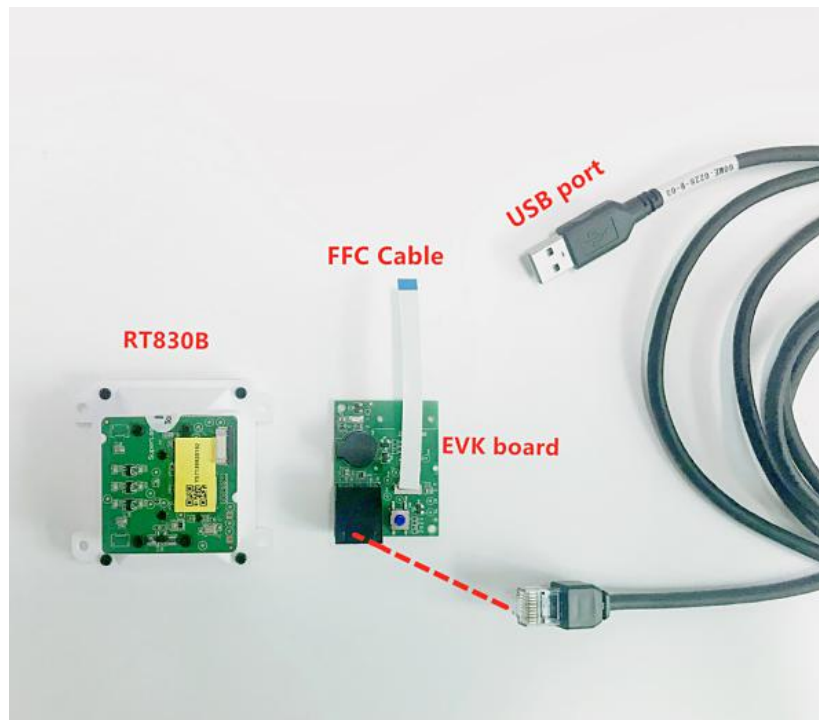


USB interface connect to your PC



2. USB-COM (USB COM Port Emulation).

If your RT830B come with USB-COM (USB COM Port Emulation), you will need to have a software that can work with a virtual serial port to test the scanner.

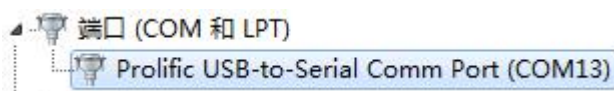


You can use your own Virtual Serial Tool, or download the Virtual Serial Tool at the following link :

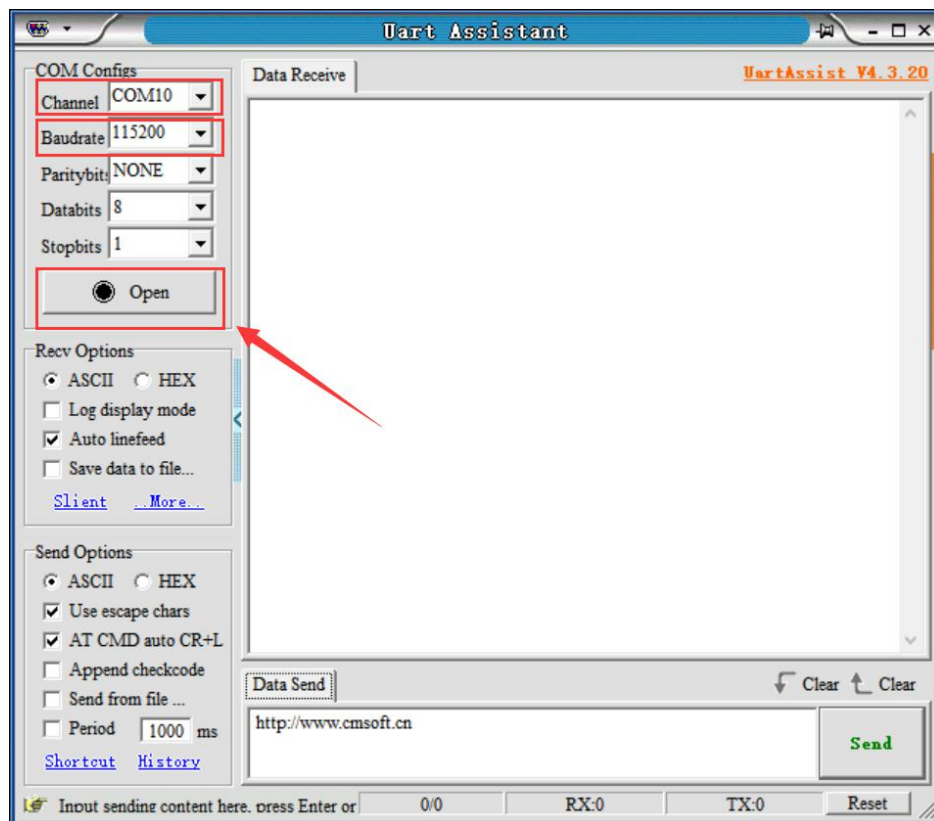
https://drive.google.com/open?id=1djokTmXZJAIDSehhI_7EMugiCazIkP5N

Please do the following steps to use the reader with USB Virtual COM.

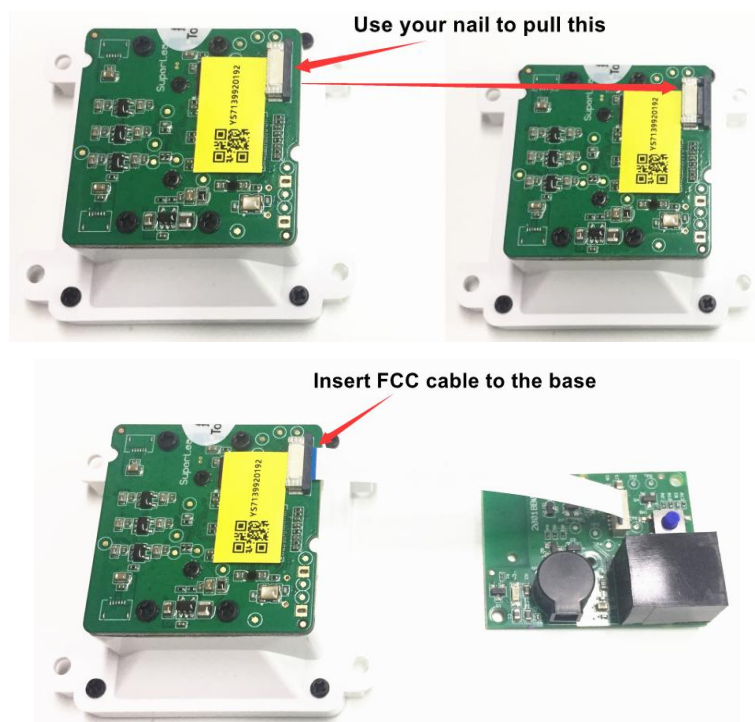
- ① Connect the reader with your PC or terminal.
- ② In most cases, the computer will install the driver automatically, if not, please contact our sales to get the driver.
- ③ Confirm the COM port number at Device Manager as below picture, below is the COM13.



- ④ Run a virtual serial port tool, then pick the exact COM port number (like the below is COM10) and also the correct baud rate 115200 (default baud rate is 115200).



For the connection of the connector, please refer to the picture below.



USB interface connect to your PC

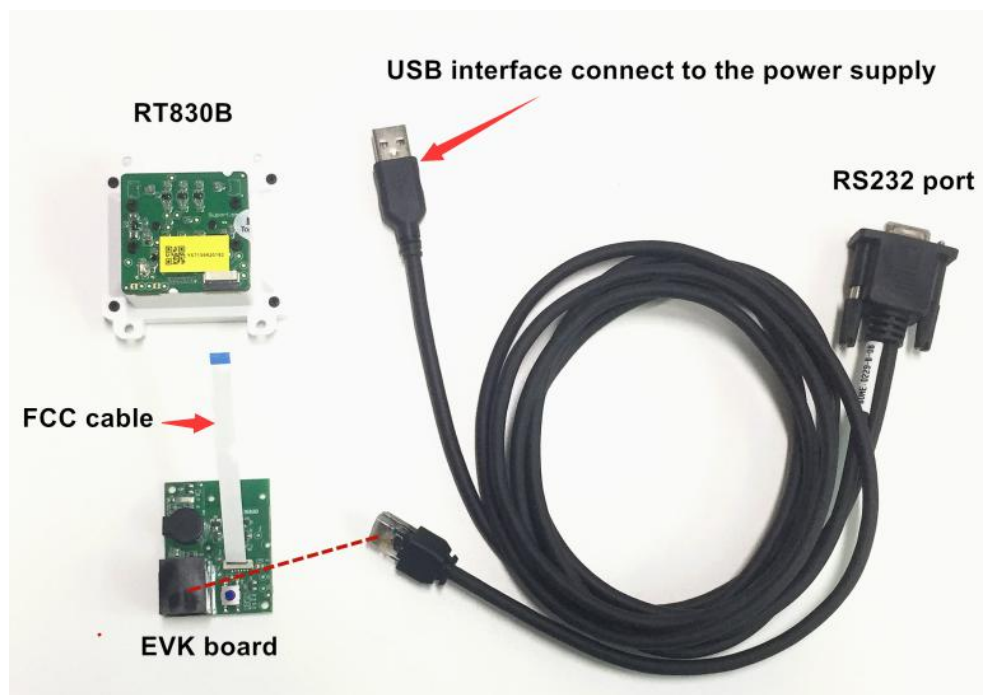


RT830B



3. RS232 Serial Port

If your RT830B come with RS232 interface, you will need to have a software that can work with a serial port to test the scanner.

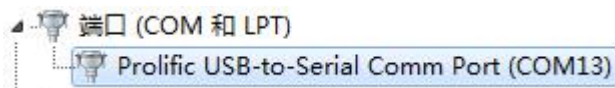


You can use your own Virtual Serial Tool, or download the Virtual Serial Tool at the following link :

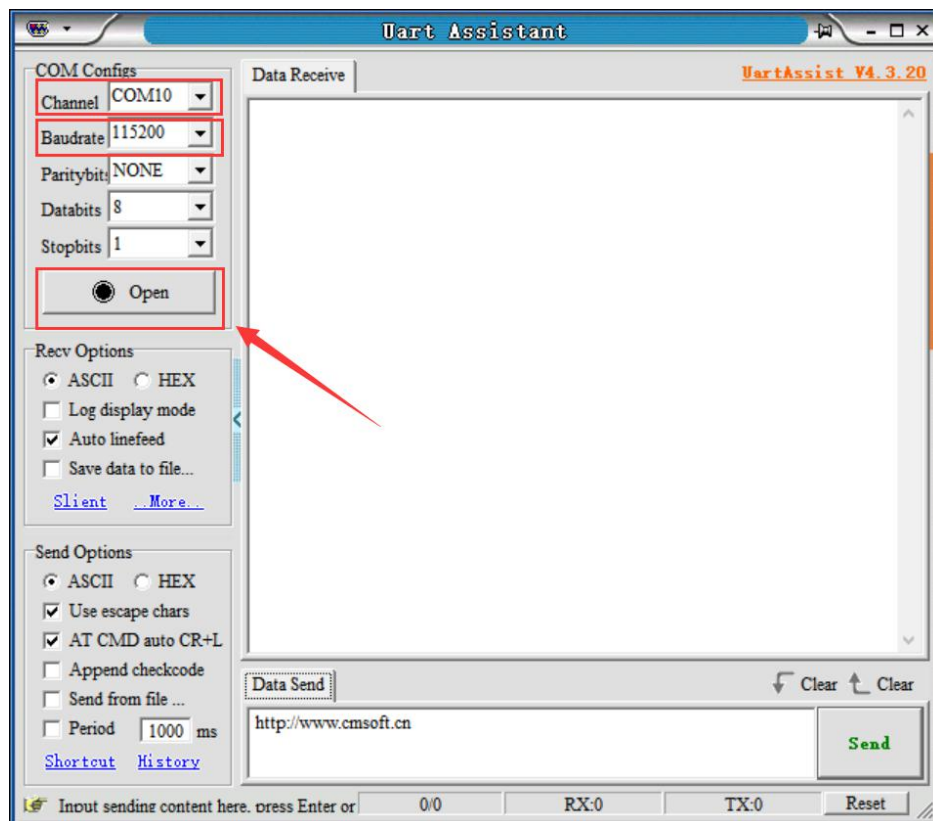
https://drive.google.com/open?id=1djokTmXZJAIDSehhI_7EMugiCazIkP5N

Please do the following steps to use the reader with RS232 serial port.

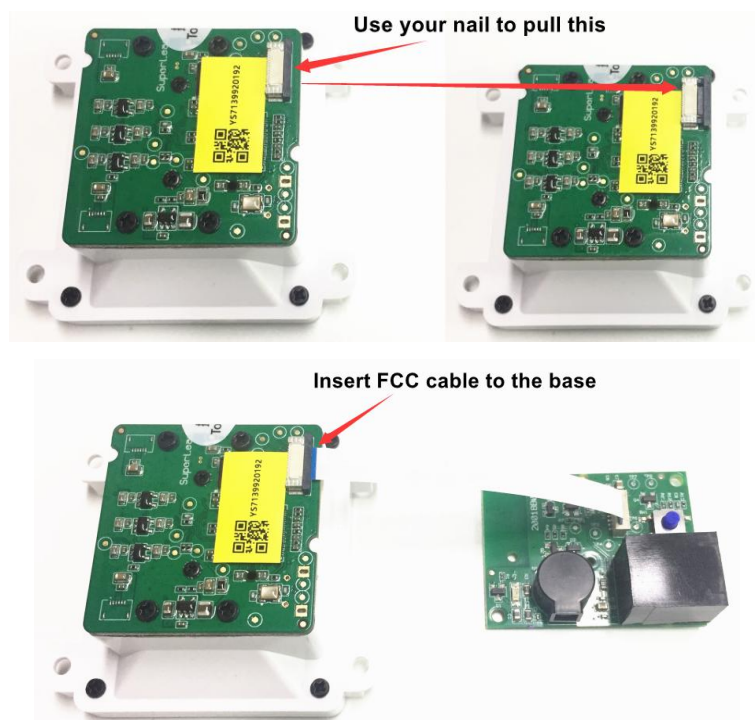
- ① Connect the reader with your PC or terminal.
- ② Confirm the COM port number at Device Manager as below picture, below is the COM13.



- ③ Run a virtual serial port tool, then pick the exact COM port number (like the below is COM13) and also the correct baud rate 115200 (default baud rate is 115200).



For the connection of the connector, please refer to the picture below.



USB interface connect
to the power supply



RS232 interface connect
to your controller



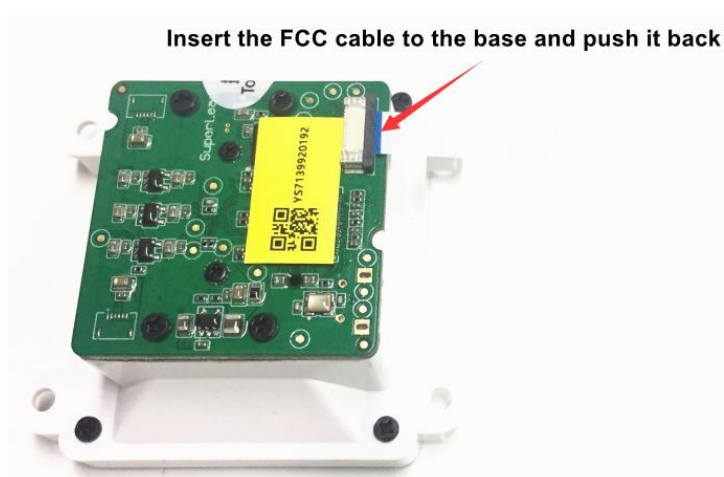
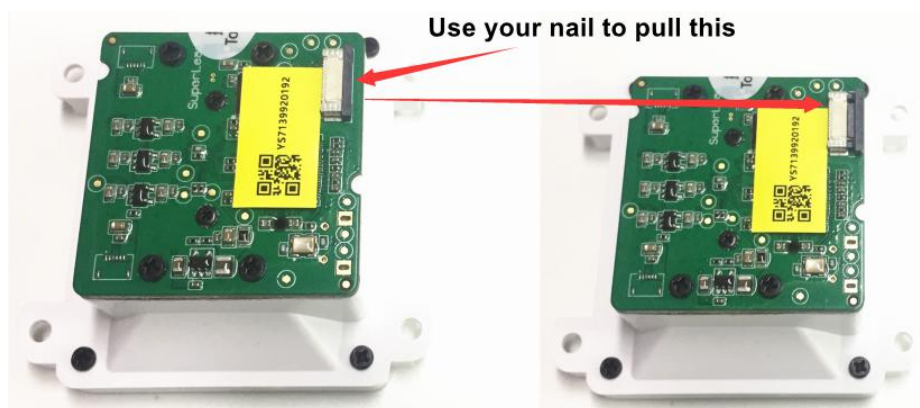
RT830B



For all of Default serial communication parameters and baud rate setting, same with above for **“USB COM Port Emulation”**

4. TTL Interface

If your RT830B come with TTL interface, for the connection of the connector, please refer to the picture below.



5. Instruction Documents Download

You can kindly download the instruction documents of reader at the following link :

<https://drive.google.com/open?id=1EssfvE1vgvpmjriBOsGmePu-Svuq7LsR>

Included:

- Integration Guide
- User Manual
- Programming Command Guide
- Datasheet

6. Programming Video Guide

You can program the barcode reader by commands, kindly refer to our video guide as below.

<https://youtu.be/LsX7aeaME00> -----Command programming guide

The barcode reader can be program by setting codes as well, kindly refer to the **RT830B User Guide**.

If you need any other technical support from RTscan, please feel free to contact us:

justin@rtscan.net, thank you!