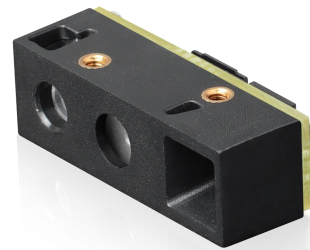




# RT214D

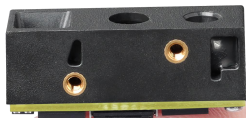
Super-small & Economical Barcode Scan Engine



RT214D scanner engine is designed to be small, cost-effective, and energy-efficient, making it an ideal choice for most kinds of embedded use for common 1D/2D barcode reading. Its lower power consumption enables it to be operated for longer periods of time in stand-alone devices. Its small size makes it easy to be embedded in whatever big-size machine or small handheld devices, such as Medical equipment, Self-service devices, PDA, Tablet, Notebook, Bluetooth ring scanner, Bluetooth pocket scanner, etc.

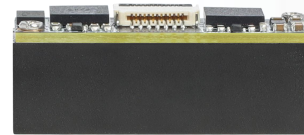
## | Super small and compact design

The super small size, lightweight, and seamless integration of the imager and decoder board facilitate the integration of the barcode scan engine RT214D into a wide variety of equipment.



## | Lower power consumption

Using advanced technology so the RT214D barcode scan engine is quite low power consumption and has outstanding power efficiency. This also contributes to extending its service life.

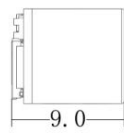
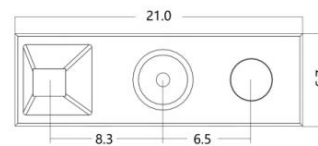
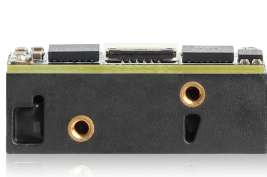


## | Cost-effective


RT214D is a highly cost-effective scan engine. if you need a scan engine for general bar code reading, RT214D will be the great economical solution, which allows you to save costs.

## Specification:

<b>Performance</b>	Image Sensor	640 * 480 CMOS	
	Illumination	White LED	
	Aiming	Red LED 625nm	
	Symbolologies	2D	PDF417 , QR Code, Data Matrix, Micro QR, Micro PDF417, Aztec, etc.
		1D	EAN-13, EAN-8, UPC-A, UPC-E, Code128, Code 39, Codabar, UCC/EAN 128, RSS, ITF-14, ITF6, Standard 2 of 5, Matrix 2 of 5, Industrial 2 of 5, Plessey, MSI Plessey, Code 11, Code 93, etc.
	Resolution	≥3mil (differ from different type bar codes)	
	Typical Depth of Field	EAN-13	65-350mm (13mil)
		Code 39	45-160mm (5mil)
		PDF417	50-125mm (6.7mil)
		Data Matrix	45-130mm (10mil)
		QR Code	30-170mm (15mil)
	Scan Mode	Sense mode, Continuous mode, Command trigger	
	Scan Angle	Roll: 360°, Pitch: ±60°, Skew: ±60°	
	Field of View	Horizontal 43°, Vertical 33°	
	Min. Symbol Contrast	10%	
<b>Mechanical/ Electric</b>	Interface	TTL-232 by itself; USB or RS232 via EVK board	
	Dimensions	21(W)×9.0(D)×6.7(H) mm (max.)	
	Weight	1.2g	
	Notification	Beep, LED indicator	
	Operating Voltage	3.3VDC ± 5%	
	Current @ 3.3VDC	Operating : 170mA(typical);	
<b>Environmental</b>	Operating Temperature	-20°C to 55°C	
	Storage Temperature	-40°C to 70°C	
	Humidity	5% to 95% (non-condensing)	
<b>Accessories (optional)</b>	Development kit board: equipped with a trigger button, beeper and RS-232 & USB interfaces	USB	USB virtual Com or USB-HID
		RS-232	Standard DB9 RS232 interface



RTSCAN

Tel: +86 755-23762089 

Website: [www.rtscan.com](http://www.rtscan.com) Email: [sales@rtscan.net](mailto:sales@rtscan.net)

Add: 553-555, Dongming Building, Minzhi Street, Longhua District, Shenzhen 518109, China

Copyright RTscan Technology Limited all rights reserved. RTscan is a registered trademark of RTscan Technology Limited. All other trademarks are the property of their respective owners. In a continuing effort to improve our products, RTscan Technology Limited reserves the right to change specifications and features without prior notice.